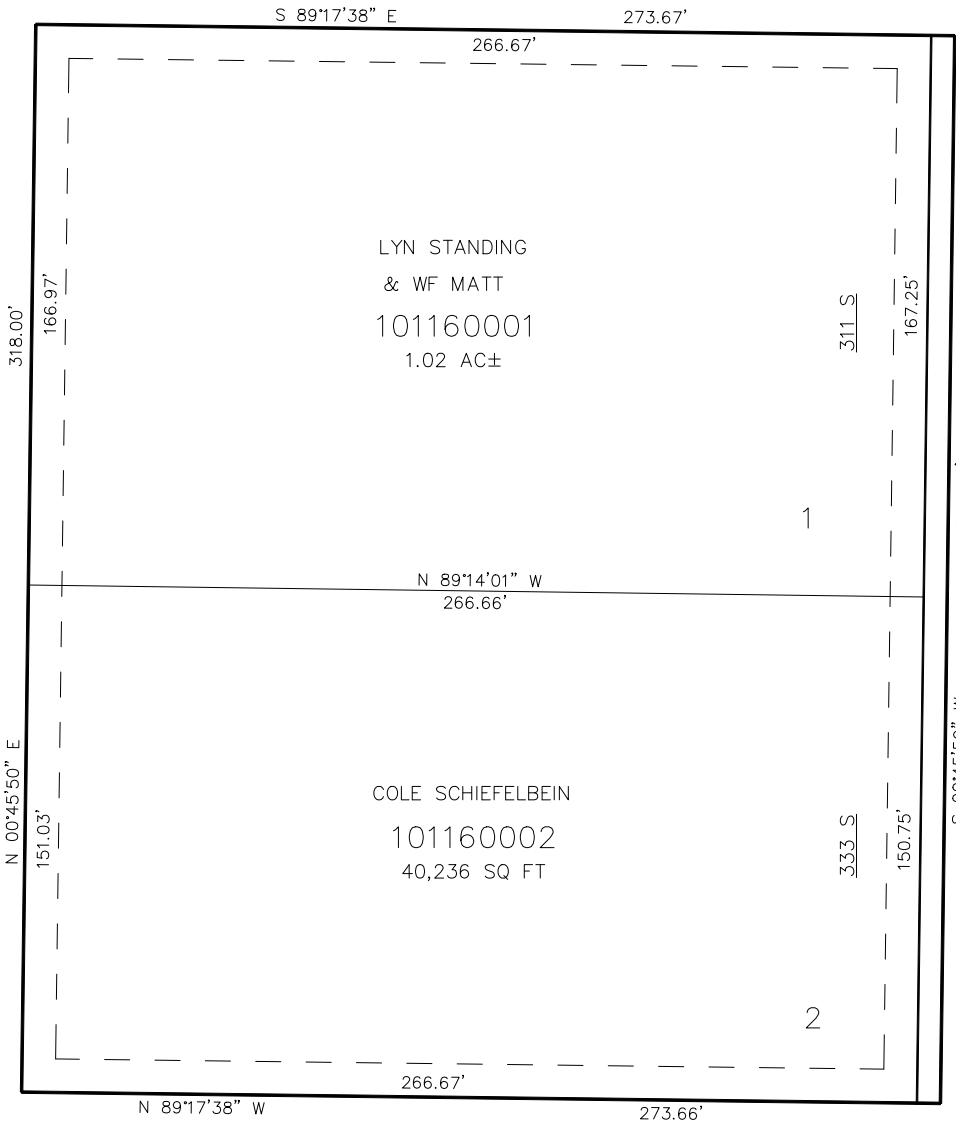


PART OF THE NE.1/4, OF SECTION 13, T.6N., R.3W., S.L.B. & M.
FREMONT SUBDIVISION

IN WEBER COUNTY
SCALE 1" = 30'

TAXING UNIT: 531

SEE PAGE 35



SEE BOOK 15, PAGE 51

SEE PAGE 35

FOR COMPLETE ENG DATA SEE
ORIGINAL DEDICATION PLAT IN
BOOK 63, PAGE 39 OF RECORDS.

SEE PAGE 35

10' UTILITY & DRAINAGE EASEMENTS EACH
SIDE OF PROPERTY LINES AS INDICATED
BY DASHED LINES EXCEPT AS OTHERWISE
SHOWN.

FOR TAX PURPOSES ONLY

BK 03-06